

## ELECTRONIC

**CARBOY-SCALE™**

## FOR SMALL DRUMS AND CARBOYS

**SAFELY MONITOR**  
CHEMICAL USAGE  
AND LEVEL

**FOR FLUORIDE,**  
SODIUM HYPOCHLORITE  
AND OTHER CHEMICALS

**SOLID PVC PLATFORM**  
WILL NEVER CORRODE

**WITH SOLO G2® OR**  
WIZARD 4000® INDICATORS

The Electronic Carboy-Scale™ provides a simple and accurate way to monitor how much chemical is being fed and how much remains in small drums and carboys. The single load cell, pivoted platform design has no moving parts and the scale platform is machined from a solid piece of PVC plastic, coated with our Tuf-Coat finish and fitted with a epoxy powder coated stainless steel hinge. A single anodized aluminum electronic load keeps electronics to a minimum for increased reliability. This combination of components creates an ultra-durable scale for harsh chemical room environments.

Using a scale is the most accurate method available for monitoring chemical inventory and the proven design of the Electronic Carboy-Scale insures that your monitoring ability will be available day in and day out.

The Electronic Carboy Scale is available in three different platform sizes to handle drum capacities from 5 gallons up to 55 gallons.



NO FINGER POINTING.  
NO FINE PRINT.™



**WIZARD 4000®**  
(1 TO 4 CHANNEL)  
Bulletin 400



**SOLO®G2**  
(1 OR 2 CHANNEL)  
Bulletin 516

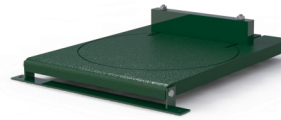
The Electronic Carboy-Scale can be ordered as a complete weighing system including a SOLO G2® or Wizard 4000® Digital Weight Indicator or as just the scale platform, to be combined with other scales or ultrasonic sensors monitored from a multi-channel weight indicator.

**FORCE FLOW**

**MODELS & ORDERING INFORMATION**

**Electronic Carboy-Scale™ with SOLO G2®**

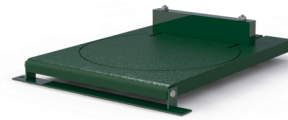
Models below include platform, electronic load cell with 10 feet of cable and SOLO G2® digital weight indicator with 4-20mA output signal. For more information on SOLO G2 digital weight indicator, see Bulletin 516.



MODEL	PLATFORM SIZE	CAPACITY	DISPLAY INCREMENTS	SHIPPING WT.
<b>GR200</b>	18 1/2" X 13 1/2" X 16 1/2"	200 lb	0.2 lb	28 lb
<b>GR100K</b>	470 X 343 X 419mm	100 kg	0.2 kg	13 kg
<b>GR400</b>	21 1/2" X 15 3/4" X 18 3/4"	400 lb	0.2 lb	31 lb
<b>GR200K</b>	546 X 400 X 475mm	200 kg	0.2 kg	14 kg
<b>GR600</b>	24" X 24" X 27"	600 lb	0.2 lb	47 lb
<b>GR300K</b>	610 x 610 x 686mm	300 kg	0.2 kg	21 kg

**Electronic Carboy-Scale™ with Wizard 4000®**

Models below include platform, electronic load cell with 10 feet of cable and Wizard 4000® digital weight indicator with 4-20mA output signal. For more information on Wizard 4000 digital weight indicator, see Bulletin 400.



MODEL	PLATFORM SIZE	CAPACITY	DISPLAY INCREMENTS	SHIPPING WT.
<b>WR200</b>	18 1/2" X 13 1/2" X 16 1/2"	200 lb	0.2 lb	26 lb
<b>WR25KHA</b>	470 X 343 X 419mm	100 kg	0.2 kg	12 kg
<b>WR400</b>	21 1/2" X 15 3/4" X 18 3/4"	400 lb	0.2 lb	38 lb
<b>WR200K</b>	546 X 400 X 475mm	200 kg	0.2 kg	17 kg
<b>WR600</b>	24" X 24" X 27"	600 lb	0.2 lb	61 lb
<b>WR300K</b>	610 x 610 x 686mm	300 kg	0.2 kg	28 kg

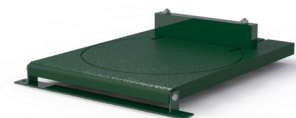
**INDICATOR OPTIONS**

SOLO G2	WIZARD 4000	DESCRIPTION
<b>G5ASP</b>	<b>W5ASP</b>	Relay for Level Alarm (up to 4)
<b>DR-CABLE</b>	<b>DR-CABLE</b>	Additional load cell cable (per foot)
<b>GRS485</b>	<b>WRS485</b>	MODBUS ASCII RS485 Serial Communication

**Scale Platform Only (Indicator sold separately)**

Use model numbers below when combining with other scales or ultrasonic sensors on a multi-channel SOLO G2 or Wizard 4000. Includes scale platform, load cell and 10 ft cable. Indicator sold separately.

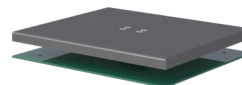
MODEL	PLATFORM SIZE	CAPACITY	SHIPPING WT.
<b>PVC200 (PVC100K)</b>	18 1/2" X 13 1/2" X 16 1/2" (470 X 343 X 419mm)	200 lb (100kg)	16 lb (7kg)
<b>PVC400 (PVC200K)</b>	21 1/2" X 15 3/4" X 18 3/4" (546 X 400 X 475mm)	400 lb (200kg)	20 kg (9 kg)
<b>PVC600 (PVC300K)</b>	24" X 24" X 27" (610 x 610 x 686mm)	600 lb (300kg)	40 lb (18kg)



**OTHER MODELS**



The Electronic Carboy-Scale™ can also be combined with the Hypo Trak® sodium hypo-chlorite monitoring system. See Bulletin 517.



Hi-accuracy electronic Carboy-Scales™ also available. See Bulletin 412.

**WWW.FORCEFLOWSCALES.COM**  
DRAWINGS • ENGINEERED SPECS • LITERATURE

